

iX-M

Intelligent Mechanic Switch



iX-M 3"
Intelligent Mechanic Switch

iX-M 3" Intelligent Mechanic Switch

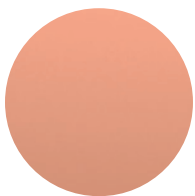
A New-Generation Experience in Function and Design



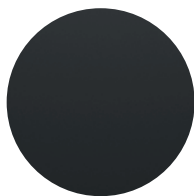
Interra iXm is a wall-mounting room controller device with an integrated temperature, humidity, brightness, proximity and air quality sensor. iXm can be easily and clearly operated through the friendly interaction interface. The iXm can control heating and cooling operating modes with 2-points, Continuous and PWM thermostat functions. Air conditioner control is available on iXm and can control AC gateway devices. iXm has fully touchable LCD screen with IPS display technology which provides low energy cost and good view angle. The device provides an adjustable LCD backlight for user comfort.

The product range has 8 different models with AQI, without AQI, with LCD or without LCD. iXm is supported up to 13 languages such as Turkish, English, German, Russian, Arabic, French, Greek, Italian, Persian, Spanish, Brazilian, Dutch and Polish. All models can be programmable with the same ETS database, which provides efficient commissioning.

iX-M 3" Launch Colors



Mocha



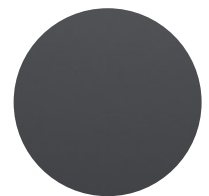
Black



Beige



White



Anthracite

iX-M 3" Intelligent Mechanic Switch Features



Lighting Control



RGB Dimming



Tunable White



Shutter Control



96 Functions
Controlled Individually



Multifunctional Touch
Interface (wLCD)

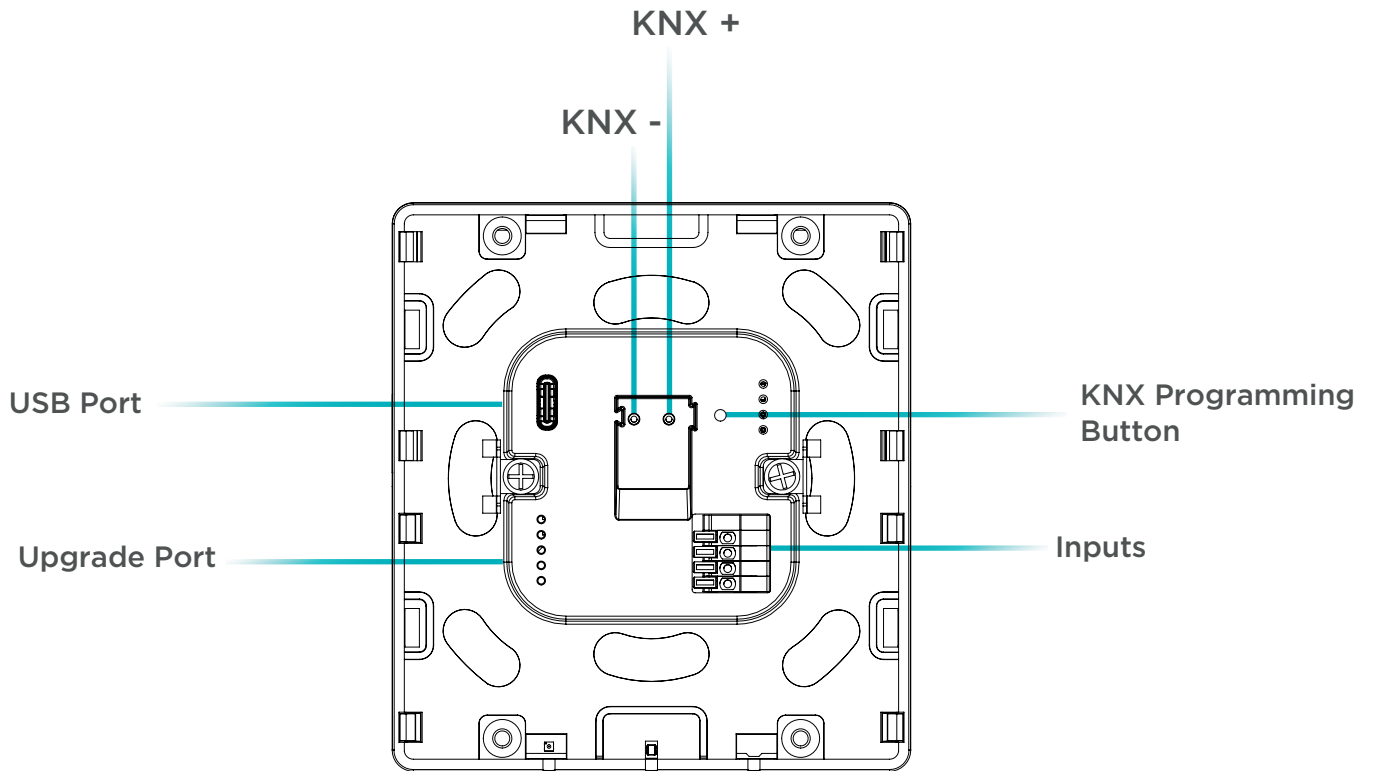


Time Trigger Function
(wLCD)

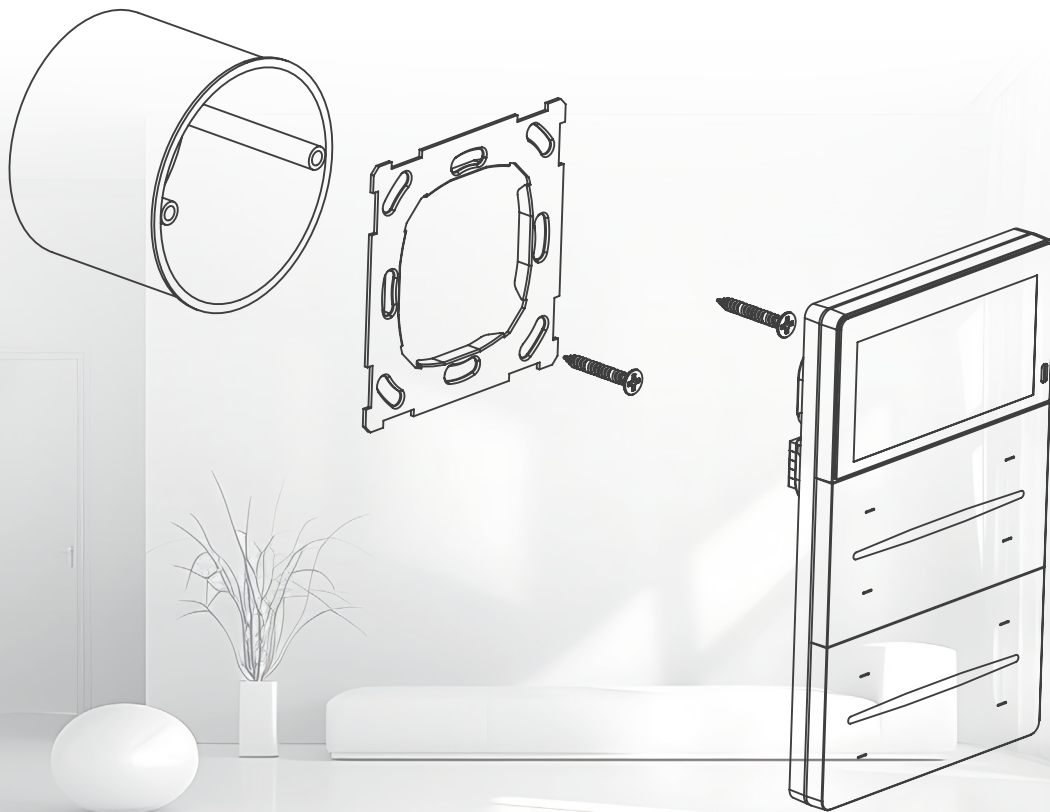


HVAC / Floor
Heating Control

iX-M 3" Technical Specifications



Mounting



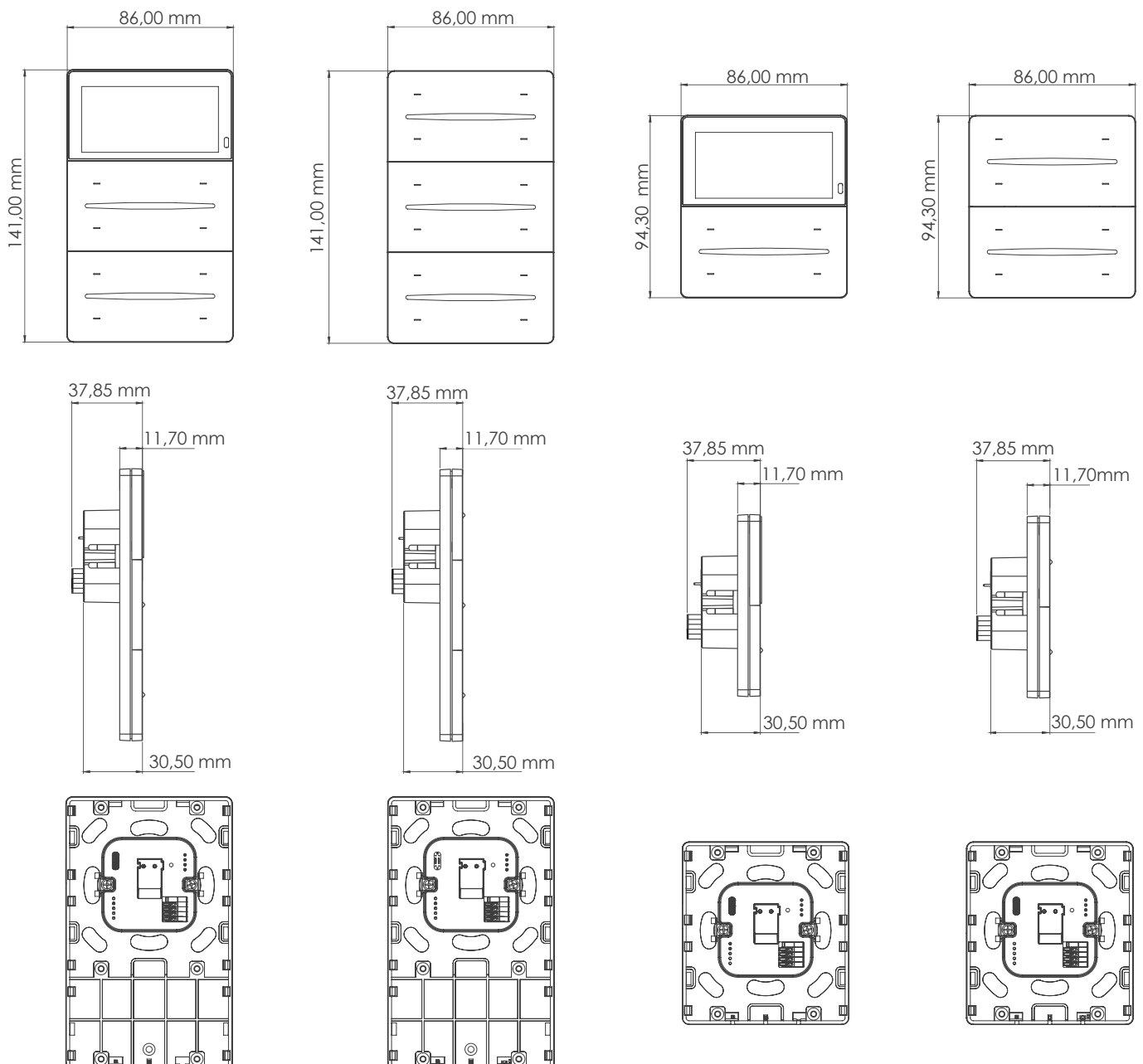
iX-M 3" Technical Specifications

Technical Specifications

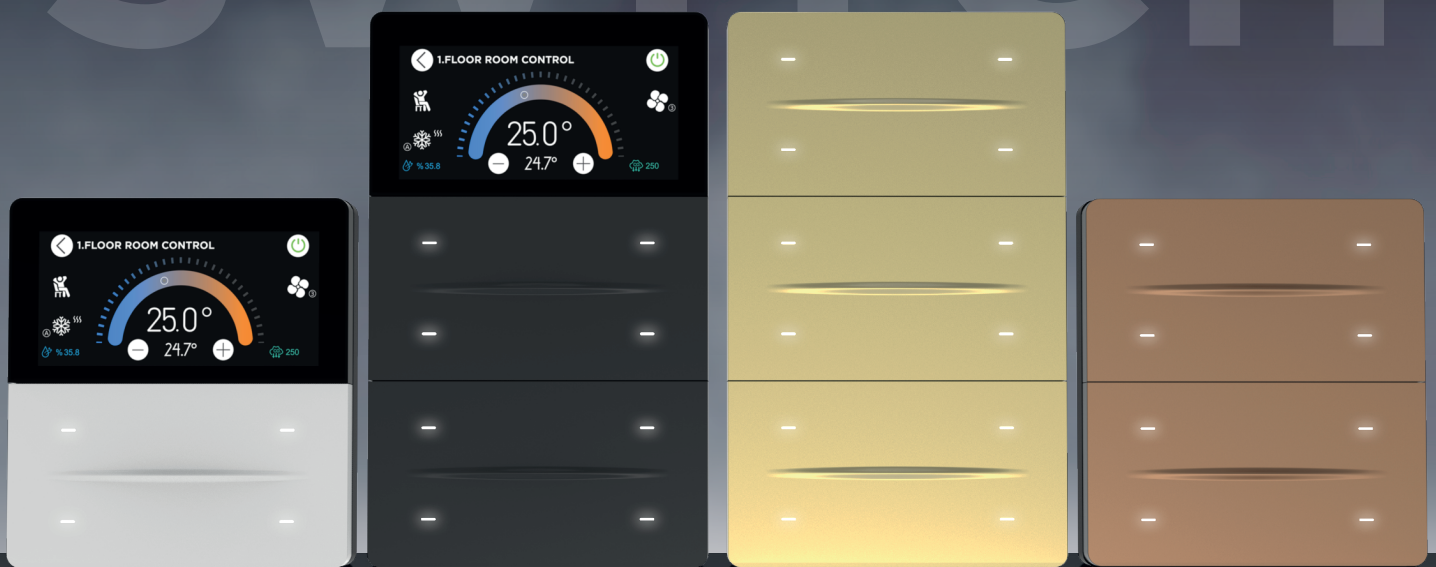
Product Code	ITR333-XXXX
Power Supply	KNX Power supply
Current Consumption	20 mA (ITR333-0XXX & ITR333-2XXX) 80 mA (ITR333-1XXX & ITR333-3XXX)
Buttons	Depends on model (4 to 12 button) 1 x KNX Programming button
Sensors	Temperature Sensor ($\pm 0.2^{\circ}\text{C}$ sens.) Humidity Sensor ($\pm 2\%$ RH sens.) Air Quality Sensor (0-500 VOC Index) Ambient Light Sensor (Up to 1800 Lux.)
Interfaces	IPS Touch Screen

Commissioning Mode	S-Mode
Type of Protection	IP 20
Temperature Range	Operation ($-5^{\circ}\text{C} \dots 45^{\circ}\text{C}$) Storage ($-20^{\circ}\text{C} \dots 60^{\circ}\text{C}$)
Maximum Air Humidity	< 90 RH
Dimensions	86 x 141 x 11.7 mm (W x H x D)* 86 x 94.3 x 11.7 mm (W x H x D)*
Certification	KNX Certified
Configuration	Configuration with ETS

Dimensions



INTELLIGENT MECHANIC SWITCH



iX-M Series

A New-Generation Experience in Function and Design

iX-M 3" Intelligent Mechanic Switch

- In models with LCD, up to 96 functions can be controlled individually. In models without LCD, the number of functions that can be controlled separately is limited to the number of available buttons.
- Up to 16 functions pages that can be controlled different functions.
- Switching, toggle, dimming, shutter/blinds controls, predetermined scenes by users, value functions that can send presented values, 2 channels control functions, step switching, music control and thermostat extension features are available.
- It can measure with integrated temperature, humidity, brightness, proximity and air quality (depending on the model) sensors.
- Configurable and programmable external inputs as analog or digital over ETS.
- Scenes from 1 to 64 can be specified and these scenes can be implemented by request.
- Room temperature regulation can be done with 2 - Points (Hysteresis), PWM or Continuous PI control options.
- Operating modes: comfort, standby, economy and protection.
- Automatic switching between operating modes via the weekly program.
- Enhanced and extended air conditioner control functions.
- Enhanced and extended touchable LCD screen functions. The user can be configured the function pages.
- Display time, date, temperature and humidity.
- The users can change the system language via the device.



iX-M

Intelligent Mechanic Switch

